

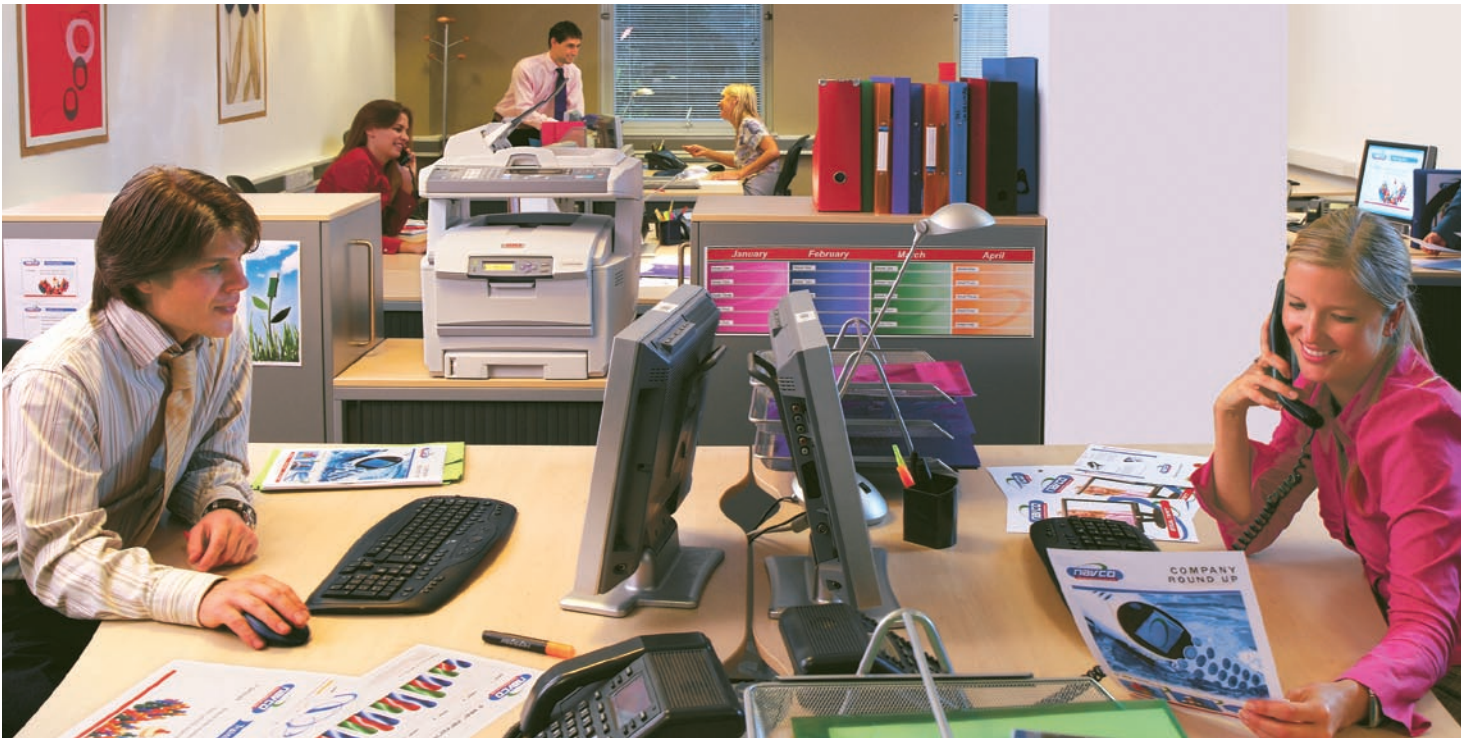
C5550n MFP

OKI[®]
PRINTING SOLUTIONS



**High performance and spectacular color
in an easy-to-use workgroup MFP**





Full multifunctionality and High Definition Color in a fast, easy-to-use MFP for small to medium workgroups

The C5550n MFP from OKI Printing Solutions is a truly integrated color-and-mono device that can print, copy, scan and fax. It will satisfy the high-volume demands of a busy office environment, bringing greater productivity and cost-savings to your business.

It's perfect for small to medium workgroups, delivering color or black & white documents quickly and efficiently, along with 4-in-1 multifunctionality and real value for your investment.

The C5550n MFP is designed to increase your pace and improve your image.

More functionality means more for business – With the C5550n MFP's superior paper handling and software, businesses can quickly produce professional results in-house. Big tasks are handled with ease. Exceptional print and copy performance will enhance productivity without compromising print quality. Analog fax and a wide range of easy-to-use "scan-to" features will streamline processes without the need for a steep learning curve. All at a highly competitive price.

High-quality documents for a better impression – Even with print speeds of up to 20 ppm in color and 32 ppm in black & white¹, there is no compromise on print quality. High Definition Color technology and 1200 x 600 dpi resolution improve detail, color depth and finish, delivering

stunning output on ordinary office paper for truly professional-looking business documents. Auto Color Balance provides consistent results throughout the life of the printer.

Manage the network, manage the costs – Included within the C5550n MFP are three useful, powerful pieces of software, all of which help to keep costs down and productivity up. The Network Set-up Tool allows easy installation across your network; PrintSuperVision enables administrators to remotely monitor all printers; and Job Accounting software makes it simple to manage color usage and costs.

Simple to install—even easier to operate – With its compact, ergonomic design the C5550n MFP fits into the smallest office space. It's network-ready and simple to set up, and the user-friendly operator panel speeds every function.

Built-in dependability keeps your work flowing – As with all OKI Printing Solutions products, the C5550n MFP is built to perform, day in, day out. Its straight paper path, high duty cycle, and high-capacity consumables help ensure that the device keeps running, minimizing the need for user intervention while maintaining workflow.

OKI Printing Solutions backs the C5550n MFP with a 1-Year On-Site limited warranty and 24x7x365 live tech support.²

C5550n MFP Highlights:

- Print, copy, scan and fax for increased productivity
- Print and copy speeds of up to 20 ppm in color and 32 ppm in black & white¹
- High Definition Color printing technology for outstanding print and copy quality
- Up to 1200 x 600 dpi print resolution
- Hassle-free networking; easy-to-use functionality
- Full-featured analog fax
- Scan to PC, network, e-mail or FTP site
- Compact design to fit your environment
- 50-sheet auto document feeder (ADF)
- 400-sheet standard paper capacity, expandable to 930 sheets with optional 2nd tray
- Banner printing capability on sheets up to 4 feet in length
- Optional duplex (2-sided) printing and 40 GB Hard Disk Drive
- Separate toner cartridges and image drums for greater cost efficiency
- 1-Year On-Site limited warranty²

¹ Published performance results based on laboratory testing. Individual results may vary.

² Available in the U.S. and Canada only.

The C5550n MFP Color Multifunction Product from OKI Printing Solutions consolidates and integrates several devices into one compact unit.

The user-friendly C5550n MFP puts its full functionality at your fingertips. The operator panel features a clear, organized array of navigation buttons, a backlit LCD display and an alphanumeric keypad. The top of the MFP tilts back for easy access to the individual toner cartridges and image drums.

50-sheet ADF: the capacity of the automatic document feeder increases user productivity

Alphanumeric keypad: enter e-mail addresses, FTP sites, fax numbers, codes and quantities with a touch

Easy-to-access functionality: primary features are simple to locate and access

High Definition Color: printing technology ensures breathtaking output, even on plain office paper

Single Pass Color™ technology: straight-through paper path allows for superior flexibility in paper handling

Flatbed scanner: handles up to 8.5" x 11" documents on the glass and up to 8.5" x 14" documents via the ADF

Backlit LCD display: further simplifies navigation; enhances user productivity

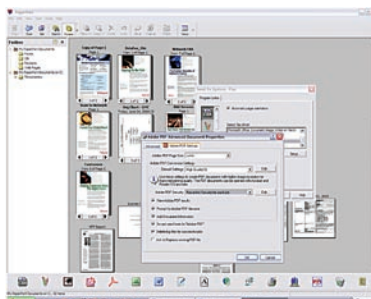
Compact, space-saving design: the small, office space-saving footprint of the C5550n MFP allows it to fit into most work environments

400-sheet paper tray: means fewer user interventions; capacity expands to 930 sheets with optional 2nd tray

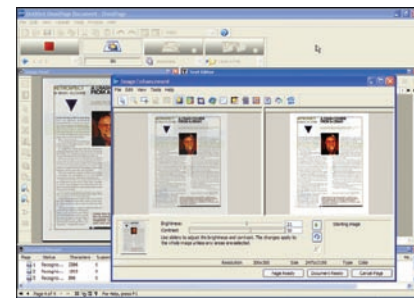
Document management made simple – The C5550n MFP comes with software that lets you move between scan-to-tasks with a single click, including Scan-to-Email, Scan-to-Folder, Scan-to-PC Fax and Scan-and-Print.

Additional software easily turns piles of paper and photos into PDF and JPEG files—using the MFP's scanner—and saves them to your computer for future use.

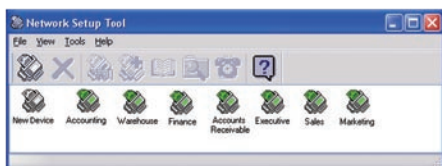
And the C5550n MFP also has a precision optical character recognition (OCR) program to quickly turn office documents and forms into electronic files for editing, searching and sharing.



PaperPort® from Nuance® is a scanning and document management application that turns paper into digital content.



Nuance's OmniPage® software converts paper into editable electronic documents (via OCR), saving you time and increasing your productivity.



Network Setup Tool makes connecting your workgroup to the C5550n MFP a breeze. Access can be granted with a click.

C5550n MFP

Specifications

Printer

- **Print Speed:** Up to 20 ppm color, 32 ppm black & white¹
- **Time to First Page:** As fast as 11 seconds in color, 8 seconds in black & white¹
- **Print Resolution:** 1200 x 600 dpi
- **Processor Speed:** 500 MHz
- **Duty Cycle:** 60,000 prints/copies per month
- **Connectivity:** USB v2.0 High Speed; 10/100 Base-T Ethernet (network)
- **Emulations:** PCL[®] 5e, PCL 5, PCL 6; PostScript[®] 3[™]
- **Operating Systems:** Windows[®] Vista[®]/Vista x64, XP/XP x64, Server 2003/Server 2003 x64, 2000
- **Fonts:** 86 PCL, 136 PostScript fonts
- **Duplex (2-Sided) Printing:** Optional

Copier

- **Copy Speed:** Up to 20 cpm color, 32 cpm black & white¹
- **First Copy Out:** As fast as 23 seconds in color, 15 seconds in black & white¹
- **Copy Resolution:** Up to 600 x 600 dpi
- **Copy Scaling:** 25% to 400% in 1% increments
- **Copy Scaling Presets:** 7 – 25%, 50%, 78%, 98% (fit to page), 100%, 127%, 200%
- **Copy Modes:** Speed, Text, Photo
- **Copy Quantity Selection:** 1-99

Scanner

- **Scan Type:** Color and black & white; flatbed
- **Scan Speed:** As fast as 3 sec./pg. in black & white; 6 sec./pg. in color
- **Scan Resolution:** Up to 4800 dpi
- **Scan-to-PC:** Create electronic file from hard copy original with Nuance[®] PaperPort[®] 10 software
- **Address Book Management:** LDAP (Lightweight Directory Access Protocol)
- **Scan-to Functionality:** Scan to e-mail with LDAP support and without PC; to server (FTP sites); CIFS and TWAIN
- **Formats Supported:** BMP, PDF, TIFF, JPEG
- **Driver Interface:** TWAIN, WIA



Fax

- **Fax Modem:** 33.6 Kbps Super G3
- **Transmission Speed:** 3 seconds/page²
- **Fax Resolution:** Up to 200 x 400 dpi
- **One-Touch Dial:** 10 locations
- **Broadcast Transmission:** Up to 100 locations, 20 groups
- **Fax Memory:** 100 pages² (1.5 MB)
- **Fax Functions:** Broadcasting, Delayed transmission, Speed dial, Auto redial, Activity report (sending/receiving)

Document Management

- **Utilities:** Nuance[®] PaperPort[®] 10, Nuance OmniPage[®] 4.2 SE; OKI[®] LPR, Color Correct, Color Swatch; Network Setup Tool; TWAIN driver; Job Accounting software; PrintSuperVision; Language Panel Downloader; Storage Device Manager; Profile Assistant

System Memory

- **Standard/Max Imaging RAM:** 256 MB/768 MB
- **40 GB Hard Disk Drive:** Optional

Paper Handling

- **Scanner ADF:** Up to 50 letter/legal sheets (16 lb. – 28 lb.)
- **Paper Sizes (Min./Max.):** Main tray from 4.1" x 5.8" to 8.5" x 14"; Multi-Purpose tray from 3" x 5" cards to 8.5" x 47.24" banners
- **Standard Printer Input:** 400 sheets
- **Maximum Printer Input:** 930 sheets with opt. 2nd tray
- **Output Capacity:** 250 sheets
- **Paper Types:** Letter, Legal, Banner, Executive, A4, A5, B5, A6; Envelopes – C5, DL, Monarch, COM 9, COM 10
- **Paper Weight:** Main tray 17 lb. – 32 lb. (64–120 gsm); Optional 2nd tray 17 lb. – 46 lb. (64–176 gsm); Manual feed 20 lb. bond – 110 lb. index (75–203 gsm)

Environmental

- **Size (WxDxH):** 19.7" x 23.6" x 26.4" (50.0 cm x 60.0 cm x 67.0 cm)
- **Weight:** 81.6 lb. (37.0 kg)
- **Power Consumption:** Peak 1200W; Standby 100W; Power Save <15W
- **Acoustic Noise:** Operating (Printing/Scanning/Copying) <53 dB; Standby <39 dB

Warranty

- **System:** 1-Year On-Site limited warranty³
- **Digital LED Printheads:** 5-Year limited warranty

For more information on the C5550n MFP Color Multifunction Product and supplies—including OKIcare warranty extensions—please call **1.800.OKI.DATA** (800.654.3282)³ or visit our website: www.okiprintingsolutions.com/us

¹ Published performance results based on laboratory testing. Individual results may vary.

² Based on ITU-T Test Chart #1.

³ Available in the U.S. and Canada only.

⁴ Toner cartridges have an estimated life based on 5% coverage of letter-size pages. Unit ships with 2,000-page "starter" toner cartridges.

⁵ Estimated life, based on 3 pages per job continuous print.

Ordering Information

Description	Part Numbers	
C5550n MFP 120V (Multilingual)	62428701	
C5550n MFP 220V (Multilingual)	62428702	
Options		
Duplex (2-Sided Printing) Unit	43347501	
530-Sheet 2nd Paper Tray	43347608	
512 MB DIMM	70051701	
40 GB Hard Disk Drive	70043502	
Storage Cabinet	70052602	
Supplies		
Toner Cartridges:		
Cyan Toner Cartridge	5,000 pg. ⁴	43324419
Magenta Toner Cartridge	5,000 pg. ⁴	43324418
Yellow Toner Cartridge	5,000 pg. ⁴	43324417
Black Toner Cartridge	6,000 pg. ⁴	43324420
Image Drum Kits:		
Cyan Image Drum Kit	20,000 pg. ⁵	43381719
Magenta Image Drum Kit	20,000 pg. ⁵	43381718
Yellow Image Drum Kit	20,000 pg. ⁵	43381717
Black Image Drum Kit	20,000 pg. ⁵	43381720
OKIcare[®] On-Site Warranty Extensions³		
C5550n MFP 1-Yr. Warranty Extension	58281801	
C5550n MFP 2-Yr. Warranty Extension	58281802	
Print Media		
Bright White Proofing Sheets:		Sheets Per Box
8.5" x 11" (32 lb.)	500	52206101
SynFlex [™] Paper (8.5" x 11" – Waterproof and Tear-resistant)	100	52205901
Ultra Gloss Paper (8 pt.):	100	52208901
	250	52208902
Banner Paper (8.5" x 35.4")	100	52206002

Specifications are subject to change without notice.

Featured products may not be available in all countries. Please contact your local office for regional availability.

©2007 Oki Data Americas, Inc. OKI Reg. T.M., M.D., Oki Electric Industry Co., Ltd. Single Pass Color T.M. and design Reg. T.M., Hot Key, High Definition Color logo T.M., Oki Data Corp. Windows, Vista Reg. T.M., Microsoft Corp. Nuance, PaperPort, OmniPage Reg. T.M., Nuance Communications, Inc. USB-IF T.M., Universal Serial Bus Implementers Forum, Inc. ENERGY STAR Reg. T.M., U.S. EPA.



OKI DATA AMERICAS, INC.

USA
2000 BISHOPS GATE BLVD.
MOUNT LAUREL, NJ 08054-4620
TEL: 800.OKI.DATA (800.654.3282)
FAX: 856.222.5320

CANADA
2735 MATHESON BLVD. EAST
MISSISSAUGA, ONTARIO L4W 4M8
TEL: 905.238.4250
FAX: 905.238.4421

LATIN AMERICA
2000 BISHOPS GATE BLVD.
MOUNT LAUREL, NJ 08054-4620
TEL: 856.231.0002
FAX: 856.222.5071

OKI DATA DE MÉXICO, S.A. DE C.V.
MARIANO ESCOBEDO, 748 8^º PISO
COL. NUEVA ANZURES C.P. 11590
MÉXICO, D.F.
TEL: 55.5263.8780
FAX: 55.5250.3501

OKI DATA DO BRASIL INFORMÁTICA LTDA.
AV. ALFREDO EGÍDIO DE SOUZA ARANHA, 100
BLOCO C – 4^º ANDAR
04726-170 – SÃO PAULO – SP – BRASIL
TEL: 11.3444.3500
FAX: 11.3444.3502

WWW.OKIPRINTINGSOLUTIONS.COM