

ES1624n MFP

**OKI**<sup>®</sup>  
PRINTING SOLUTIONS



**Brilliant color. A brilliant decision.**

**Letter/Legal Color Multifunctional System**





## Step up to faster color print/copy speeds for greater productivity—with brilliant output quality plus scan-to functions standard.

The ES1624n MFP Color Multifunctional System from OKI Printing Solutions will give you the impact of color for your documents without the impact a high-speed color system can have on your budget. Now you can get the most breathtaking color copies and printed documents—as well as crisp, clear black & white—with the ES1624n MFP. It's fast, flexible and affordable. More than that, it's your complete Color CreationCenter!

### Highlights:

- One of the fastest color multifunctional systems in its class: network-ready printing with full-color output at up to 16 ppm, black & white at up to 24 ppm<sup>1</sup>
- Convenient, high-quality copying in full color at up to 16 cpm, black & white at up to 24 cpm<sup>1</sup>
- ScanSoft® PaperPort® and TextBridge® software for converting scanned documents to editable digital files; scanning files directly to PCs, e-mail, and FTP sites; PC faxing (via PC modem); document processing, accounting, and management
- 50,000 page-per-month duty cycle
- PCL® 5c, PCL 6 and PostScript® 3™ emulations standard (Windows® and Mac® compatible)

- 600 x 600 dpi scan resolution, 1200 x 600 dpi print resolution for clear text and graphics
- 50-sheet Auto Document Feeder (supports up to legal-size documents); 100-sheet multi-purpose tray and 300-sheet standard tray
- Supports banner-size paper up to 47.24" long
- 7 preset copy scaling keys; zoom from 25% to 400% in 1% increments
- Easy menu control of document type, color density, paper trays
- Handles up to 110 lb. index card stock
- Standard 400-sheet printer paper capacity; upgradable to 930 sheets
- Standard 128 MB RAM; upgradable to 320 MB
- Available with optional automatic duplexer unit and 20 GB Hard Disk Drive
- Optional network fax capability via Equisys Zetafax Business Edition LAN Fax software<sup>2</sup>
- High-capacity, 2-piece consumables for low running costs
- Total support from your local Authorized OKI Printing Solutions MFP Provider
- 24/7/365 live technical assistance, toll-free: 1.800.OKI.DATA (800.654.3282)<sup>3</sup>

<sup>1</sup> Published performance results based on laboratory testing. Individual results may vary.

<sup>2</sup> Requires PC (Windows XP, 2000 or NT) equipped with Group III, Class 1 or 2 fax modem.

<sup>3</sup> Available in the U.S. and Canada only.

# Introducing a fast and versatile replacement for your existing color and black & white printers: The ES1624n MFP Color Multifunctional System.



Workgroups and individual users will benefit from the feature-rich and easy-to-use ES1624n MFP.

## Designed to deliver efficiency, savings and breathtaking results.

Don't run to the copy center every time you need color copies or printouts. Make them at your desk with the ES1624n MFP Color Multifunctional System from OKI Printing Solutions, your Color CreationCenter:

- Take advantage of Single Pass Color™ Digital technology as an alternative to high-priced copy-center prints and copies—and enjoy a laundry list of functionality plus high-quality output, long-lasting consumables, and unmatched reliability.
- Print full-color documents as fast as 16 pages per minute or black & white pages at 24 ppm.<sup>1</sup>
- Make full-color copies as fast as 16 per minute or black & white at 24 cpm.<sup>1</sup>
- Produce up to 99 color copies from an original page or graphic image—processed directly from your PC or via the network.

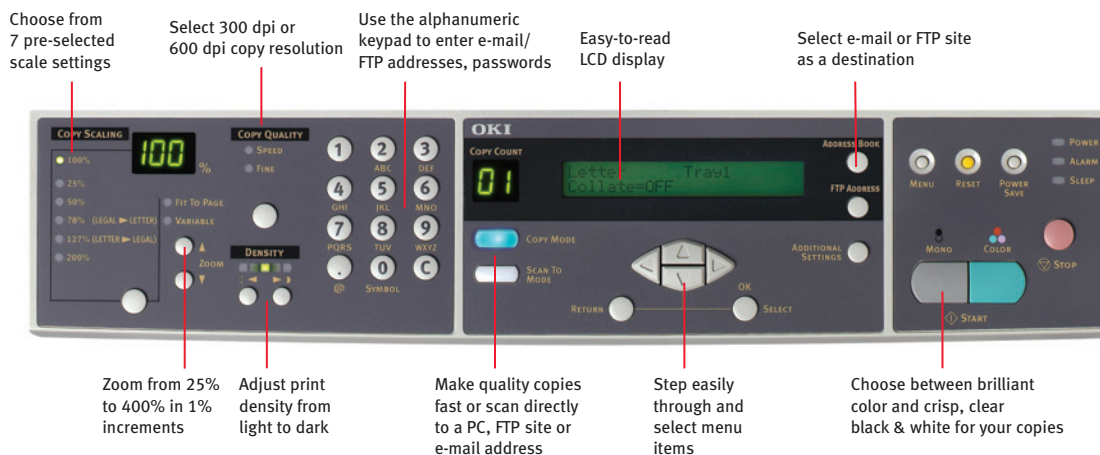
## The ideal digital performer, stand-alone or networked.

The ES1624n MFP is a compact communication system. Set it up even where space is limited, so individuals and small workgroups can have desktop convenience or easy access to walk-up copying, scanning, PC faxing, and fast network printing.

## Full “scan-to” functionality.

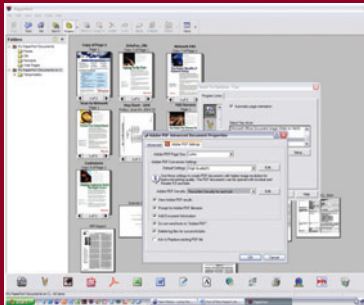
Scan hard-copy documents or artwork and save them as electronic files or images on your PC—or transmit them via e-mail or into a network folder directly from the MFP:

- When e-mailing a file, the LCD display directs you to fill in the recipient's e-mail address (“To”) and the “Subject” line—or select from the e-mail address book—just as you would on your PC. The system scans your document or artwork, saves it and sends it as an attachment via your Ethernet network and SMTP server.
- Likewise, you can send a file to a folder on the network or over the Internet to a folder on a remote PC or a designated FTP server site.
- You can save or send your documents or art as PDF, JPEG, PCX TIFF or M-TIFF files.
- Send and receive faxes from the PC or via the Internet.<sup>2</sup>



<sup>1</sup> Published performance results based on laboratory testing. Individual results may vary.  
<sup>2</sup> Requires optional network faxing software.

# The ES1624n MFP extends your capabilities out of the box:



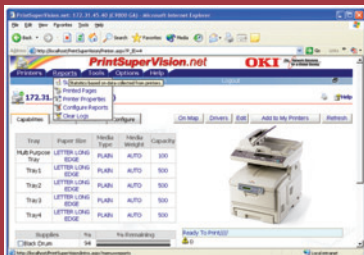
ScanSoft PaperPort

## Productivity Solutions:

**ScanSoft® PaperPort®** The world's most popular scanning and document management application turns paper into digital content, creates PDF files, and finds information fast.

**ScanSoft® TextBridge®** Simple and fast way to convert paper into editable electronic documents, saving time and increasing productivity.

**Equisys Zetafax® for Networks (optional)** A versatile network fax software solution for both desktop and hard-copy faxing, enabling employees to send and receive faxes from their PCs or from the network-connected ES1624n MFP.



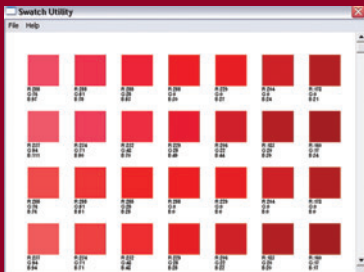
PrintSuperVision

## Networking Utilities:

**MFP Network Utility** Manages network-connected OKI Printing Solutions MFP devices; includes tools for Address Books, Individual Profile Manager, Color Adjustment and LDAP Management.

**Network Extension** Creates an additional tab (STATUS) in PCL® and PostScript® drivers that allows user to monitor the status of a selected printer.

**PrintSuperVision** Internet-based software components that enable administrators to access and distribute printer data and control printer functionality.

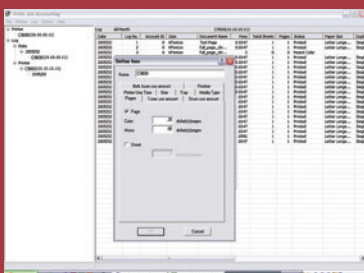


Color Swatch

## Color Utilities:

**Color Correct** Helps adjust how RGB colors are printed; components include Color Tuning for Office Palettes and Hue and Saturation.

**Color Swatch** Helps to match color of printed output to specific color displayed in application.



Job Accounting Software

## Print Tracking:

**Job Accounting (Server and Client)<sup>1</sup>** From OKI Printing Solutions, it enables tracking of color printing costs and easy monitoring and control of printer usage. Server component allows configuration of printing devices, costs and printer access; client component is installed on PC to provide data on each print job.

<sup>1</sup> Requires optional hard disk drive for optimal performance.

**Take control of the way your MFP is used.**

The ES1624n MFP allows an administrator to grant or restrict scanning and/or copying access to individuals or groups of users. Simply assign individual PIN identification codes to your personnel, according to their privileges. They can unlock the restricted functions—with your permission—by entering their PIN codes into the machine's control panel.

**Get the most flexibility in your choice of media.**

With an ES1624n MFP, you can output reams of reports and high-impact presentations with color graphics; postcards on up to 110-lb. index; mailers on water-proof, tear-resistant sheets; brilliant transparencies; even attention-grabbing banners up to 8.5" by 47.24" long! Use standard off-the-shelf media or select your stock from the tested media collection available through your OKI Printing Solutions provider.

**Improve your bottom line.**

The ES1624n MFP delivers cost-effective operation as well as an exceptional return on your investment—with its outstanding reliability, long-lasting consumables and competitively low cost per print/copy.



Long-lasting consumables by OKI Printing Solutions lead to lower operating costs and a better bottom line.

**You'll control your operating costs by:**

- Supporting one device rather than several
- Stocking fewer replacement supplies
- Reducing service interruptions

And with the cost of a color page from the ES1624n MFP coming in almost as low as the black & white page cost you're getting from your old monochrome printer, your purchase decision is looking downright brilliant.

**Enjoy unmatched support and technical expertise.**

You can expect total support from your Authorized OKI Printing Solutions MFP provider. If you need technical assistance—even at 3 a.m.—you can speak to a live expert, 24/7/365, by calling toll-free: 800.OKI.DATA (800.654.3282).<sup>1</sup>

The ES1624n MFP from OKI Printing Solutions. High-quality, cost-efficient color printing, copying, scanning and document management. The perfect multifunctional system for your environment.

**It's your very own Color CreationCenter!**



Paper and film media from OKI Printing Solutions—including banner sheets—are tested to work reliably with our MFP systems.

<sup>1</sup> Available in the U.S. and Canada only.

# ES1624n MFP

## Specifications

### Printer

- **Print Speed:** up to 16 ppm Color; up to 24 ppm Mono<sup>1</sup>
- **Processor:** 400 MHz PowerPC CPU
- **Print Resolution:** Up to 1200 x 600 dpi
- **Duty Cycle:** Rated at up to 50,000 pages per month
- **Connectivity:** IEEE-1284 bi-directional parallel; USB v2.0 (on Mac®, requires OS 9.x or higher); Auto interface switching
- **Network I/F:** 10/100 Base-T Internal Ethernet Print Server
- **Emulations:** PCL® 5c, PCL 6, PostScript® 3™ emulation standard; Epson® FX; IBM® ProPrinter® III; Direct PDF Printing (Windows® OS only; requires optional hard disk drive)
- **Operating Systems:** Stand-alone and network – Windows XP, Me, 2000, 98, NT® 4.0; Mac® OS 8.6 – 9.x, OS X v10.1 – 10.3.8
- **Resident Scalable Fonts:** 136 Adobe® PostScript fonts; 80 PCL fonts
- **Bitmap (PCL) Fonts:** Line printer, OCR-A, OCR-B, USPS Zip
- **Options:** 530-sheet 2nd Paper Tray; Duplex unit; 20 GB Hard Disk Drive

### Copier

- **Copy Speed:** up to 16 cpm Color; up to 24 cpm Mono<sup>1</sup>
- **Resolution:** 600 x 600 dpi
- **Enhanced Resolution:** 9600 x 9600 dpi
- **CPU:** RISC microprocessor
- **Copy Scaling:** 7 preset one-touch keys – 25%, 50%, 78% (Legal to Letter), 98% (fit to page), 100%, 127% (Letter to Legal), 200%
- **Zoom Range:** Down to 25%, up to 400% in 1% increments
- **Density/Sharpness Control:** 5 levels (lighter/darker)
- **Color Intensity Control:** 7 levels
- **Background Removal:** Yes
- **Copy Quantity Selection:** 1–99 copies from original
- **Menu Control:** Selection of document type, color density, paper tray, margin shift, edge erase, N-up

### Scanner

- **Scan Type:** 50-sheet ADF and single-sheet flatbed
- **Scan-to-PC:** Create electronic file from hard copy original (TWAIN scanning driver included; Windows-compatible only)

<sup>1</sup> Published performance results based on laboratory testing. Individual results may vary.

<sup>2</sup> Requires PC (Windows XP, 2000 or NT) equipped with Group III, Class 1 or Class 2 fax modem.

<sup>3</sup> Available in the U.S. and Canada only.

Specifications are subject to change without notice.

© 2005 Oki Data Americas, Inc. OKI Reg. T.M., M.D. M.R., OKIcare Reg. T.M., Oki Electric Industry Co., Ltd. Single Pass Color T.M. and design Reg. T.M., Oki Data Corp. SynFlex T.M., Oki Data Americas, Inc. PostScript, Acrobat Reg. T.M., PostScript 3 T.M., Adobe Systems Inc. Windows, Windows NT Reg. T.M., Microsoft Corp. IBM, ProPrinter Reg. T.M., International Business Machines, Inc. Epson Reg. T.M., Seiko Epson Corp. PCL, Reg. T.M., Hewlett-Packard Co. Mac Reg. T.M., Apple Computer Inc. Nico, Reg. T.M., Nico Cuppen Software. ScanSoft, PaperPort, TextBridge Reg. T.M., ScanSoft, Inc. Zetafax Reg. T.M., Equisys, Inc. USB-Logo T.M. Universal Serial Bus Implementers Forum, Inc. Energy Star Reg. T.M., U.S. EPA.



### OKI DATA AMERICAS, INC.

USA  
2000 BISHOPS GATE BLVD.  
MOUNT LAUREL, NJ 08054-4620  
TEL: 800.OKI.DATA (800.654.3282)  
FAX: 856.222.5320

CANADA  
2735 MATHESON BLVD. EAST  
MISSISSAUGA, ONTARIO L4W 4M8  
TEL: 905.238.4250  
FAX: 905.238.4421

LATIN AMERICA AND MEXICO  
2000 BISHOPS GATE BLVD.  
MOUNT LAUREL, NJ 08054-4620  
TEL: 856.231.0002  
FAX: 856.222.5071

[WWW.OKIPRINTINGSOLUTIONS.COM/US](http://WWW.OKIPRINTINGSOLUTIONS.COM/US)

### • Scan-to-Email / Scan-to-File

	Scan-to-Email	Scan-to-File
<b>Protocol</b>	SMTP, MIME	FTP, HTTP, CIFS
<b>Mail Server Authentication</b>	SMTP, POP3	N/A
<b>File Formats</b>	PDF, TIFF, M-TIFF, JPEG, PCX	

- **Imaging Applications:** Works with most popular image editing software packages
- **Bundled Imaging Applications:** ScanSoft® PaperPort® and TextBridge® software standard
- **TWAIN Driver:** Windows 98 and higher

### Network Fax<sup>2</sup> (Optional)

- **LAN Fax Software:** Optional Equisys ZetaFax® Business Edition. Support for two fax server lines, e-mail gateway, Web client, DDI routing, Queue management file formats
- **File Formats:** ASCII, BMP, DCX, EPS bitmaps, Epson® FX and LQ series, GIF, JPEG, PCX, PICT, Targa, TIFF and others.

### System Memory

- **Standard Imaging RAM:** 128 MB
- **Maximum Imaging RAM:** 320 MB
- **Scan Buffer and Image Processing RAM:** 192 MB

### Paper Handling

- **Scanner ADF:** Up to 50 letter-size sheets
- **Maximum Scan/Copy Area:** 8.5" x 11.69"
- **Standard Printer Input:** 400 sheets (300-sheet standard Tray and 100-sheet Multi-Purpose Tray)
- **Maximum Capacity:** 930 sheets with optional 2nd tray
- **Multi-Purpose Tray:** 100 sheets – Overhead transparencies, mailing label stock, up to 8.5" x 47.24" (21.6 cm x 120 cm)
- **Paper Weight:** Main tray 20 lb. – 32 lb. bond; optional 2nd paper tray 20 lb. – 47 lb. bond; manual feed 20 lb. bond – 110 lb. index card stock; optional duplex 20 lb. – 28 lb. bond

### Print Media

- **Bright White Proofing Sheets:** 8.5" x 11" (32 lb. bond)
- **Premium Color Transparency Film:** 8.5" x 11" sheets
- **Premium Card Stock:** 8.5" x 11" (60 lb. cover, 90 lb. index, 110 lb. index)
- **SynFlex™ Paper:** 8.5" x 11" (waterproof and tear-resistant)
- **Premium Envelopes:** #10 size
- **Banner Paper:** 8.5" x 35.4"

**For more information** on the ES1624n MFP and supplies, including OKIcare® Extended Service Programs: **1.800.OKI.DATA** (800.654.3282).<sup>3</sup>